

Data Collection Cloud

Data Collection and Visualization

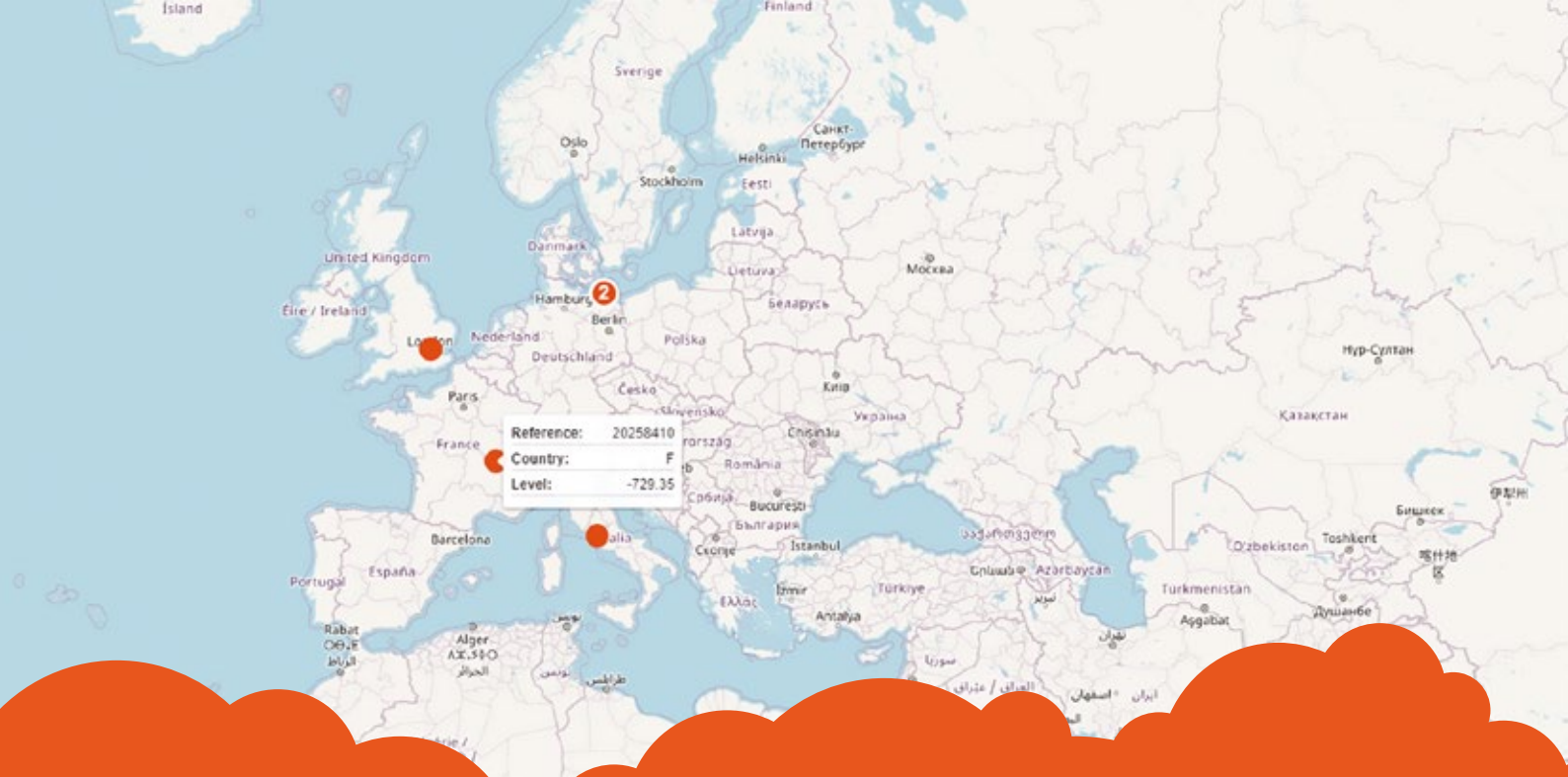
The Data Collection Cloud (DCC) is created to help collect and visualize data from machines. Data collection is a valuable method to enable improved support for your customers and to continuously improve performance of your products. It enables preventive and predictive maintenance, alarm analysis, reports, fleet status etc.



*Secomea and Inuatek are partners collaborating around the DCC. Secomea is the cybersecurity company behind the hardware and Remote Access components that enables data to be received and viewed within the DCC. Inuatek is the software development company programming the DCC.

Inuatek is a Danish tech company specializing in making value from data. This means collecting data, storing and processing data and visualizing it. Inuatek has through collaboration with partners such as Secomea, ifm electronics and DTU (Denmark's Technical University) expanded to provide customized IoT solutions to the industry.





Customize Your Data Collection Cloud

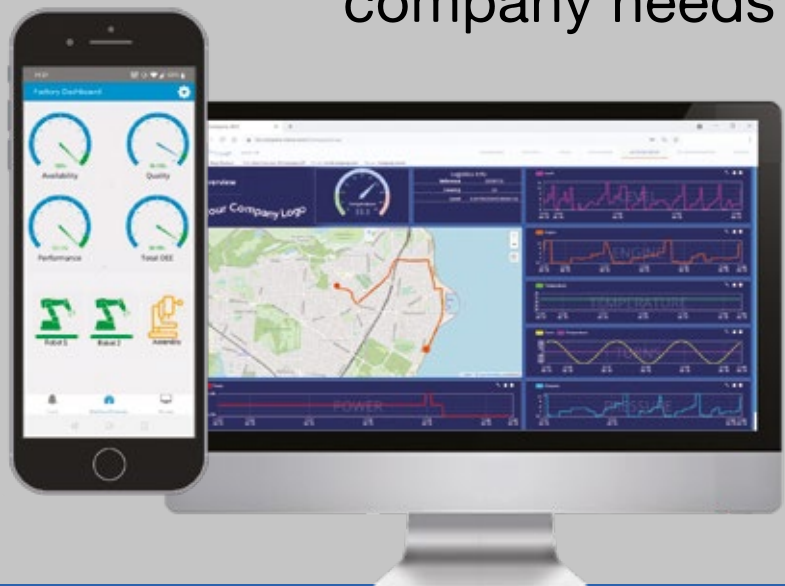
At Inuatek it is a priority that the Data Collection Cloud (DCC) fits your company needs and requirements.

Inuatek offers different support packages: A free Basic Support or a Premium Support where development, customization and consultancy are included. Upgrades and maintenance are always included.

Never miss a moment

Our mobile app enables you to view your dashboards at all times. This keeps you up to date with your OEE and standard configurable dashboards. Manage your fleet no matter where you are. This way you can always keep track of how much you have produced or check to see if there were any downtimes during the production time.

We offer **Widgets & Rebranding** for individual company needs



You are welcome to **contact us at info@inuatek.com** to get started or for any further information

